



Conversations
ON

Career Pathways
with students, parents, and staff





Conversations
on

Career Pathways
with students, parents, and staff

THE POWER OF CAREER PATHWAYS: LAUNCHING PROGRAMS OF STUDY AT YOUR SCHOOL



Conversations
ON

Career Pathways
with students, parents, and staff

**WHY ARE CAREER PATHWAYS AND
PROGRAMS OF STUDY IMPORTANT?**

**HOW CAN PROGRAMS OF STUDY BE
IMPLEMENTED AT YOUR SCHOOL?**

WWW.VALEES.ORG

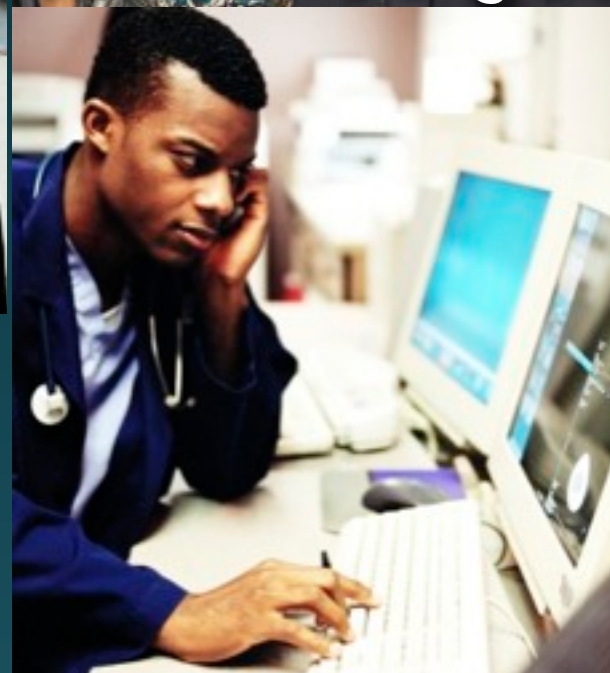


Conversations ON

Career Pathways with students, parents, and staff



Who am I?



CAREER PATHWAYS

CONNECTING

- ≡ Career Interests
- ≡ Aptitudes and abilities
- ≡ Programs of Study
Course Sequences
- ≡ Career Opportunities
- ≡ Pursuit of Passion



PATHWAYS INITIATIVE

- ▶ Expand Conversations about Career Pathways and Programs of Study with CTE staff, counselors, and administrators
- ▶ Establish POS development team to create model POS and implementation strategies customized for each secondary school
- ▶ Develop regional POS in selected CTE areas
- ▶ Create online interactive portals to promote conversations around career pathways
- ▶ Share model plans and strategies with student services and CTE program committees

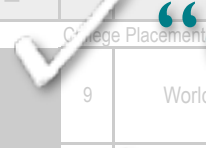
PROGRAMS OF STUDY



CTE Teachers Secondary Schools



CTE Teachers Community College



“Core Curriculum” Teachers



Administrators



Counselors



Industry Professionals



Parents



Students

FIRE SCIENCE PROGRAM OF STUDY Newark Community High School

Law, Public Safety, Corrections and Security: Emergency and Fire Management Services
Career Pathway Plan of Study for ► Learners ► Parents ► Counselors ► Teachers/Faculty

This Career Pathway Plan of Study (based on the Emergency and Fire Management Services Pathway of the Law, Public Safety, Corrections and Security Career Cluster) can serve as a guide, along with other career planning materials, as learners choose on a career path. Courses are listed with the package only recommended courses and should be determined by each learner's educational and career goals.

EDUCATION LEVELS	GRADE	English/ Language Arts	Math	Science	Social Studies/ Sciences	Other Required Courses Other Electives Recommended Electives Learner Activities	*Career and Technical Courses and/ or Degree Major Courses for Emergency and Fire Management Services Pathway	SAMPLE Occupations Relating to This Pathway
SECONDARY	9	World Lit I	Essential Algebra or Algebra I, Geometry†	Biology or Physical Science	World History I or II, Geography, Modern Issues	Classes of study should meet state and local high school graduation requirements. * Consideration should be given to the student's career pathway when choosing elective coursework. Participation in local fire department programs may provide valuable field-based experiences. * Post-secondary education entrance requirements should also be considered.	Indian Valley Vocational Center Grade 11-12 Fire Science I * Fire Science II *	► Dispatcher ► Emergency Management and Response Coordinator ► Emergency Planning Manager ► EMT ► Fire Fighter ► Forest Fire Fighter ► Forest Fire Inspector and Investigator ► Hazardous Materials Responder ► Manager/Supervisor of Fire Fighters or Forest Fire Fighters ► Rescue Worker ► Training Officer
	10	World Lit II	Geometry or Geometry Non-Proct, Geometry	Ag Science, Biology II, Advanced Biology, Chemistry	World History I or II, Geography, Modern Issues			
	11	American Lit III or Heroes & Villains/Bus English	Algebra II, College Algebra, Pre-Calc	Ag Science, Biology II, Advanced Biology, Chemistry	World History I or II, Geography, Modern Issues, Sociology, Psychology, US History/Govt			► State Fire Marshal Certification Opportunities ► Fire Fighter I and II ► Fire Apparatus Engineer ► Rescue Specialist - Roadway Extraction
	12	British Lit IV	Algebra II, College Algebra, Pre-Calc, Calc	Ag Science, Biology II, Advanced Biology, Chemistry, Physics	World History I or II, Geography, Modern Issues, Sociology, Psychology, US History/Govt			► Fire Office I and II ► Hazardous Materials First Responder
POSTSECONDARY	Year 13	COM *100 or 121 EN *101 or 151 EN *102 or 113	MTH *101		PSY *100	3 credits gen.ed.elective, 3 credits fire science elective, EMT 120	FSC100 Fire Science I* FSC 110 Fire Science II * FSC120 Hazardous Materials Operations * FSC 140 Fire Apparatus Engineer * FSC 150 Vehicle & Machinery Operation FSC 160 Tactics and Strategy I FSC 170 Fire Science Instructor I FSC 200 Fire Science III * FSC210 Fire Science IV * FSC 220 Fire Inspection & Prevention FSC 231 Fire Science Administration I FSC 232 Fire Science Administration II FSC 233 Fire Science Administration III FSC 234 Fire Science Administration IV FSC 260 Tactics and Strategy II FSC 270 Fire Science Instructor II (See WCC catalog for progression of Fire Science certificates.)	Some State Fire Marshal Certificates require experience with a fire department in addition to course work. It is strongly recommended that Fire Science majors either gain employment or volunteer with a fire department as early as possible.
	Year 14							
	Year 15							
	Year 16							

† With instructor permission.

Each high school student's four year plan should consider this Program of Study in relationship to selecting local course offerings in consultation with their guidance counselor.

* These courses are aligned with Waubesa Community College's curriculum and are eligible for articulated credit.

Course sequences aligned with Illinois graduation requirements and aligned with Illinois State Fire Marshal's curriculum.

PROGRAMS OF STUDY



FIRE SCIENCE PROGRAM OF STUDY Newark Community High School

Law, Public Safety, Corrections and Security: Emergency and Fire Management Services
Career Pathway Plan of Study for ► Learners ► Parents ► Counselors ► Teachers/Faculty

This Career Pathway Plan of Study (based on the Emergency and Fire Management Services Pathway of the Law, Public Safety, Corrections and Security Career Cluster) can serve as a guide, along with other career planning materials, as learners continue on a career path. Courses listed within this plan are only recommended coursework and should be individualized to meet each learner's educational and career goals.

College Placement Assessments-Academic/Career Advisement Provided								
SECONDARY	9	World Lit I	Essential Algebra or Algebra I, Geometry†	Biology or Physical Science	World History I or II, Geography, Modern Issues	• Plans of study should meet state and local high school graduation requirements. • Consideration should be given to the student's career pathway when choosing elective coursework. Participation in local fire department programs may provide valuable field-based experiences. • Post-secondary education entrance requirements should also be considered.	Indian Valley Vocational Center Grade 11-12 Fire Science I * Fire Science II *	► Dispatcher
	10	World Lit II	Geometry or Geometry Non-Proof, Algebra II†	Ag Science, Biology II, Advanced Biology, Chemistry	World History I or II, Geography, Modern Issues			► Emergency Management and Response Coordinator
	11	American Lit III or Heroes & Villians/Bus English	Algebra II, College Algebra, Pre-Calc	Ag Science, Biology II, Advanced Biology, Chemistry	World History I or II, Geography, Modern Issues, Sociology, Psychology, US History/Govt			► Emergency Planning Manager
	12	British Lit IV	Algebra II, College Algebra, Pre-Calc, Calc	Ag Science, Biology II, Advanced Biology, Chemistry, Physics	World History I or II, Geography, Modern Issues, Sociology, Psychology, US History/Govt			► EMT
Articulation/Dual Credit Transcribed-Postsecondary courses may be taken/moved to the secondary level for articulation/dual credit purposes.								
POSTSECONDARY	Year 13	COM *100 or 121 ENG *101 or 151 ENG *102 or 153	MTH *101		PSY *100	3 credits gen.ed.elective, 3 credits fire science elective, EMT 120	FSC100 Fire Science I* FSC 110 Fire Science II * FSC120 Hazardous Materials Operations * FSC 140 Fire Apparatus Engineer * FSC 150 Vehicle & Machinery Operation FSC 160 Tactics and Strategy I FSC 170 Fire Science Instructor I FSC 200 Fire Science III * FSC210 Fire Science IV * FSC 220 Fire Inspection & Prevention FSC 231 Fire Science Administration I FSC 232 Fire Science Administration II FSC 233 Fire Science Administration III FSC 234 Fire Science Administration IV FSC 260 Tactics and Strategy II FSC 270 Fire Science Instructor II (See WCC catalog for progression of Fire Science certificates.)	► Fire Fighter
	Year 14							► Fire Office I and II
	Year 15							► Fire Apparatus Engineer
	Year 16							► Rescue Specialist - Roadway Extraction

[†] With instructor permission.

Each high school student's four year plan should consider this Program of Study in relationship to selecting local course offerings in consultation with their guidance counselor.

* These courses are aligned with Waubesa Community College's curriculum and are eligible for articulated credit.

Course sequences aligned with Illinois graduation requirements and aligned with Illinois State Fire Marshal's curriculum.

PROGRAMS OF STUDY AT NEWARK HIGH SCHOOL

- Developed through a mini-grant from VALEES
 - Year One: Business Courses, Fire Science, Law Enforcement
 - Year Two: Agriculture, Family and Consumer Sciences
 - Year Three: Fine Arts
 - Year Four: Family and Consumer Sciences updated
- Counselor and CTE teacher collaborated on the content.
- Web master converted MS Word files into html documents and posted on school's website.

CONVERSATIONS

- Conversation surrounding courses currently offered at Newark and what students should take to be prepared for pursuing a career in a particular field
- Conversation about resources
- Conversation about post-secondary options
- Conversation on how to introduce students to Programs of Study

INITIAL OUTCOMES

- Paper Format with community college courses listed
- List of college websites to visit

MISTAKES

- Someone would constantly have to check college information and website addresses to make sure information was up-to-date.
- Students had to use the course description book to look at Programs of Study. (only available one time per year)
- Teachers could talk about Programs of Study in classrooms, but it wasn't occurring at the proper times.

ROUND TWO!

- Electronic Programs of Study
 - Information accessed through hyperlinks
 - More easily accessible on school website at **ALL** times of the year
- Introduced During Career Unit
 - Better timing as students filled out/modified 4-year plan
 - Could use Program of Study sheet while doing career research
- Provided More Opportunities for Purposeful Discussion In and Out of the Classroom

NEWARK EXAMPLES

www.newarkhs.k12.il.us/programs_of_study.html

MICHELLE MCANALLY

COUNSELOR

NEWARK COMMUNITY HIGH SCHOOL DIST. #18

MMCANALLY@NEWARKHS.K12.IL.US

PLANO HIGH SCHOOL

How it began

- Accounting POS

VALEES Mini-Grant

- PLC's

- CTE, Business, English, Math & Science

- Goals

- To see the relevance of high school courses to a career/
college pathway

- Teachers need to make informed decisions on
curriculum content and course alignment

Students need a guide-post for making a 4 year plan

PLANO HIGH SCHOOL

Choosing a Career Area

- High student interest- poll their students
- Career Clusters website- www.careerclusters.org
- Use the Career Cruising website- www.careercruising.com

• Research

- 2 and 4 year College/Universities Programs
 - Looked at General Ed requirements & Major Course work
- High School Classes
 - Course Description guide
 - Talking to other PLC's

PLANO HIGH SCHOOL

Conversations

- UNBELIEVABLE
- Foods- Stats class, Accounting
- Business- Statistics and Probability
- Art classes- for education classes
- Drafting classes

• Template

- Download a template (www.valees.org)
- Save as a Word documents (made it easier)
- Filled in High School & College links
- I changed them back to web pages and then put them on the website.

PLANO HIGH SCHOOL

Plano High School Link

<http://www.plano88.org/>

- VALEES Website

http://www.valees.org/pathways_pos.html

PLANO HIGH SCHOOL

Conclusion

- Shared with each PLC
- Used them for scheduling and 4 year planning with students

EVE PHILLIPS

COUNSELOR

PLANO HIGH SCHOOL

PLANO DISTRICT #88

EPHILLIPS@PLANO88.ORG

OPPORTUNITIES FOR CONVERSATIONS

- ▶ WHAT OPPORTUNITIES FOR CONVERSATION ABOUT CAREER PATHWAYS EXIST OR CAN BE CREATED AT YOUR SCHOOL?





Conversations
on

Career Pathways
with students, parents, and staff

► WWW.VALEES.ORG

Career Pathways

For each individual there is a moment of discovery - finding a pathway to discover our passion and an understanding of who we are.



Conversations ON

Career Pathways with students, parents, and staff

Who am I?

Where do I
want to go?

How might
I get there?

