

San Antonio 2013

Living miDream

Engaging Students in Exploring Career Pathways

Finding my pathway in pursuit of my passion

National
Career Pathways
Network
Conference

*Linking Education
and Economic Progress*



For each individual there is a
moment of discovery - finding a
pathway to discover our
passion and an understanding of
who we are.





KANELAND



NEWARK

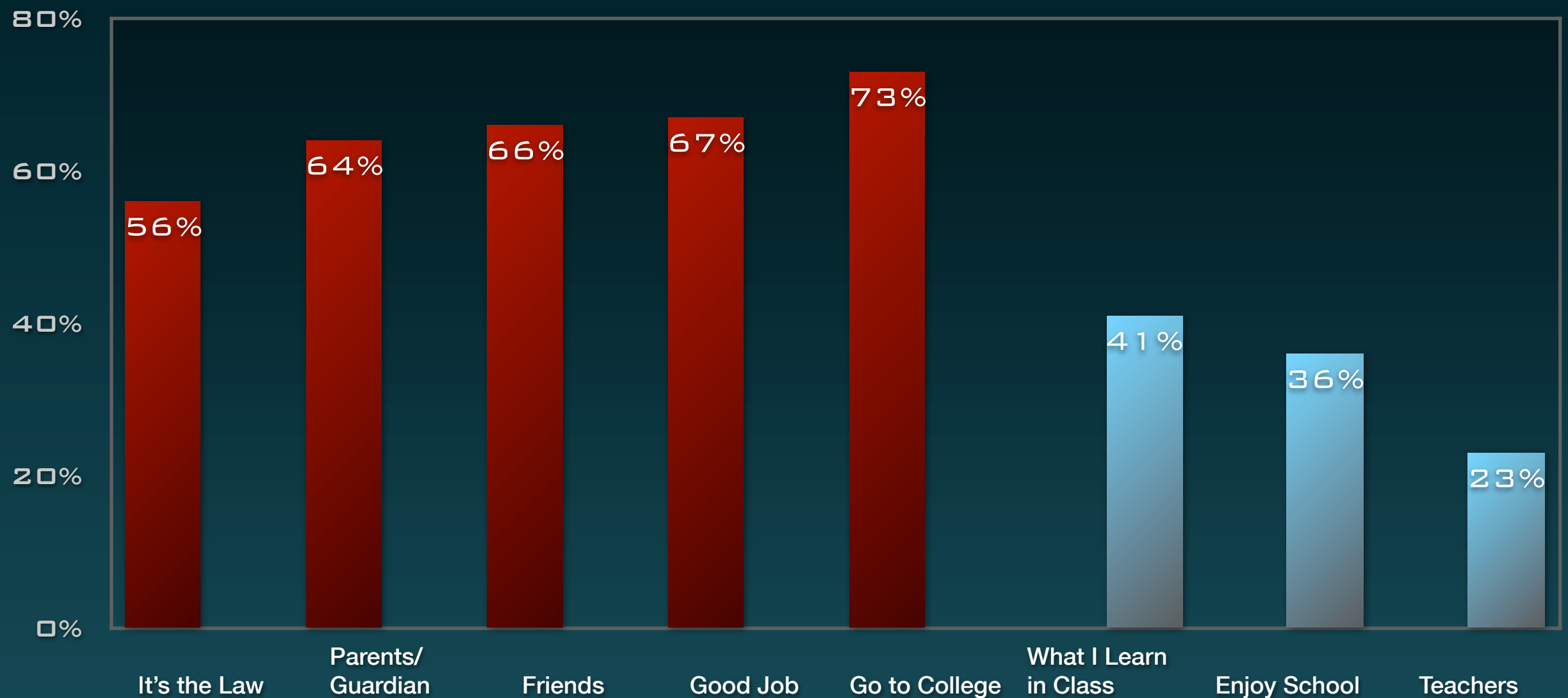


OSWEGO

WWW.VALEES.ORG



Why do students go to school?



High School Study of Student Engagement 2009

CAREER PATHWAYS QUIZ

SURVEY OF CANADIANS

- ▶ IT IS NORMAL FOR 18 YEAR-OLDS TO HAVE MADE FINAL DECISIONS ABOUT THEIR FUTURE EDUCATION AND CAREER PLANS.
 - A) TRUE
 - B) FALSE
- ▶ ____% OF STUDENTS DROP OUT BEFORE COMPLETING THEIR POST-SECONDARY EDUCATION PROGRAM.
 - A) 6%
 - B) 15%
 - C) 26%
 - D) 32%
- ▶ ____% OF POST-SECONDARY STUDENTS GRADUATE FROM A DIFFERENT PROGRAM THAN THE ONE THEY STARTED IN.
 - A) 19%
 - B) 31%
 - C) 45%
 - D) 60%
- ▶ TWO YEARS AFTER GRADUATION ____% OF CANADIAN UNDERGRADUATES ARE IN JOBS THAT DO NOT REQUIRE THE SKILLS THEY ACQUIRED IN UNIVERSITY?
 - A) 29%
 - B) 50%
 - C) 62%
 - D) 71%
- ▶ ____% OF HIGH SCHOOL STUDENTS WOULD LIKE ADDITIONAL HELP WITH CAREER PLANNING?
 - A) 25%
 - B) 42%
 - C) 65%
 - D) 70%

THE DECADE AFTER HIGH SCHOOL PARENTS GUIDE BY CATHY CAMPBELL

2012 53.6 % OF PEOPLE UNDER
THE AGE OF 25 WITH A
BACHELOR'S DEGREE ARE
UNEMPLOYED OR
UNDEREMPLOYED

NORTHEASTERN UNIVERSITY
DREXEL UNIVERSITY
ECONOMIC POLICY INSTITUTE

Connected Learning from distance, heart, and Hands



Discovering Aptitudes
Your Natural Talents

Developing Abilities

Taking Ownership

Achieving Mastery

Pursuing Your Passion

Exploring Career Interests
out Career Pathways

Preparing for Multiple
Career Pathways

and confused



A photograph of a serene forest scene. A dirt path winds through a lush green landscape. On the left, a large, moss-covered tree trunk is prominent in the foreground. The path is flanked by vibrant green grass and various flowering plants, including a large bush of pink azaleas. In the background, numerous tall, slender trees with dense green foliage create a canopy. The overall atmosphere is peaceful and natural.

Who am I?

**Where do I
want to go?**

**How might
I get there?**

REFLECTION

Evaluate our own experiences,
understand how we think,
learning from our mistakes,
repeating successes,
revising and planning

MANIFESTING

Visioning
what we want in our lives and
realizing our own innate
power to bring our vision to
reality

APPLYING DIGITAL LITERACY

Effectively using technology in
communicating, creating and
connecting with the human element

ADVOCACY

Creating opportunities for learning,
discovering external experts in
support of our vision, and
developing an
entrepreneurial spirit in
pursuit of our passion



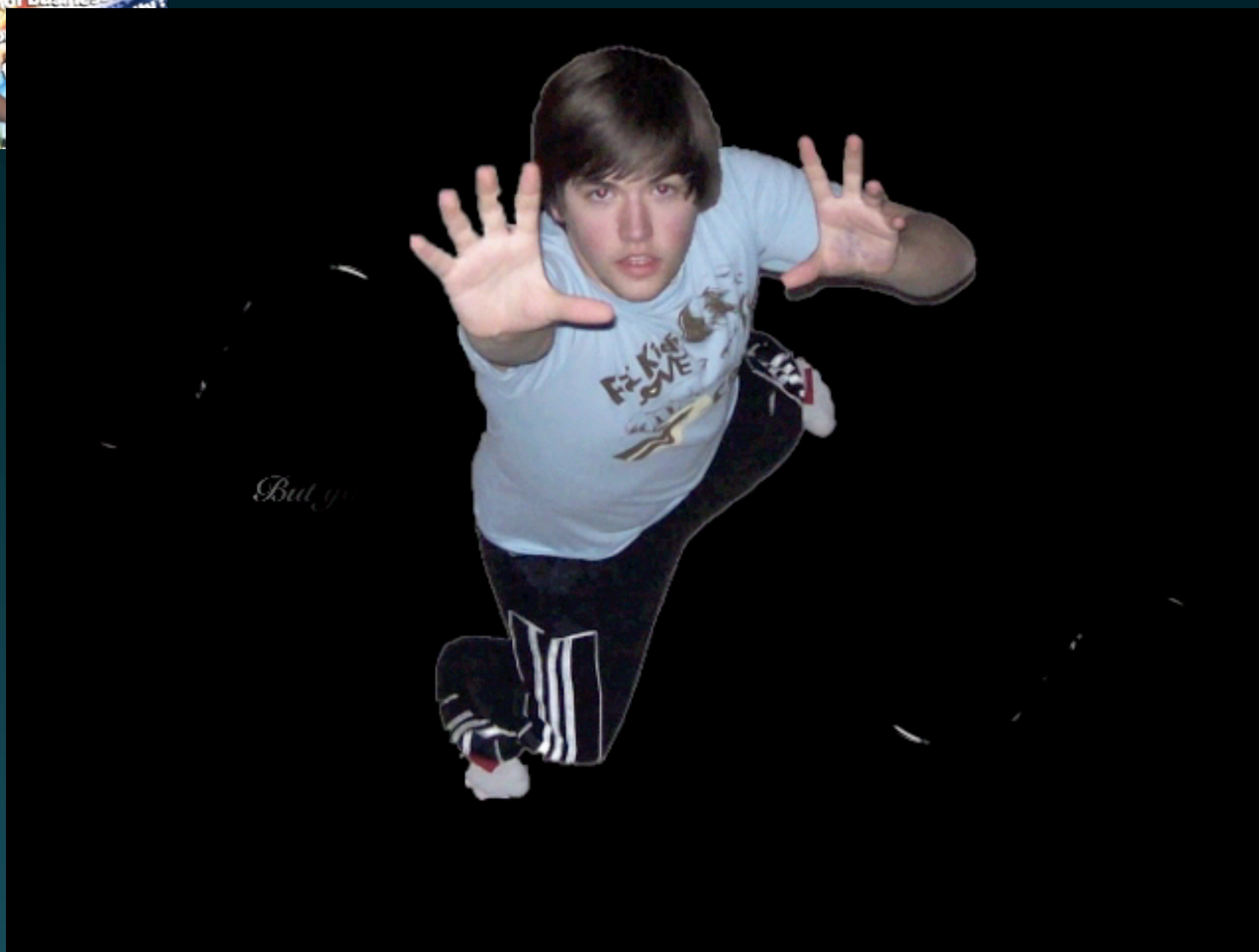
**WHO ARE THE PEOPLE THAT
ENCOURAGED YOU TO PURSUE YOUR
DREAMS?**

WRITE DOWN 3 WORDS THAT DESCRIBE YOU.

IS THIS WHAT OTHERS SEE IN YOU
OR
WHAT YOU THINK YOU DISPLAY TO OTHERS?

**WHERE MIGHT
LIVING MIDREAM
FIT IN MY SCHOOL?**







This is my life.



TOOLS

- ▶ PERSONALITY ASSESSMENT
 - TRUE COLORS
- ▶ CAREER AWARENESS ONLINE TOOLS
 - CAREER CRUISING
- ▶ DIGITAL CAMERA / SCANNER
- ▶ DIGITAL DARKROOM - EDITING SOFTWARE
 - PHOTOSHOP
- ▶ VIDEO CAMERA
- ▶ VIDEO EDITING SOFTWARE
 - IMOVIE / MOVIE MAKER

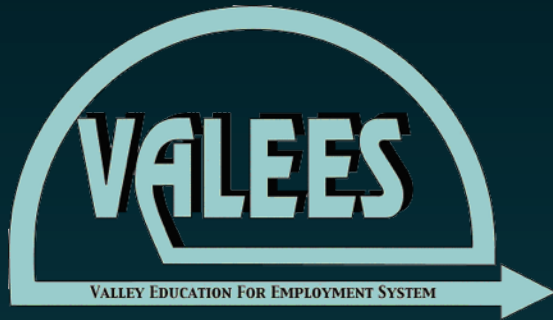
TIMEFRAME

4 WEEKS

- ▶ **DAY 1** - ORIENTATION, WHO AM I, GLOBAL MARKETPLACE / ENTREPRENEURSHIP / LEARNING & WORKING IN A COLLABORATIVE AGE
- ▶ **DAY 2** - PROCESS CHECK, WORKSHOP ON FORMAL PRESENTATION, COLLABORATING ON PROJECTS
- ▶ **DAY 3** - CONFERENCE PRESENTATION (REGIONAL)
- ▶ **DAY 4** - CONFERENCE PRESENTATION (STATE)
- ▶ **DAY 5** - CONNECTING, CELEBRATING, REFLECTING



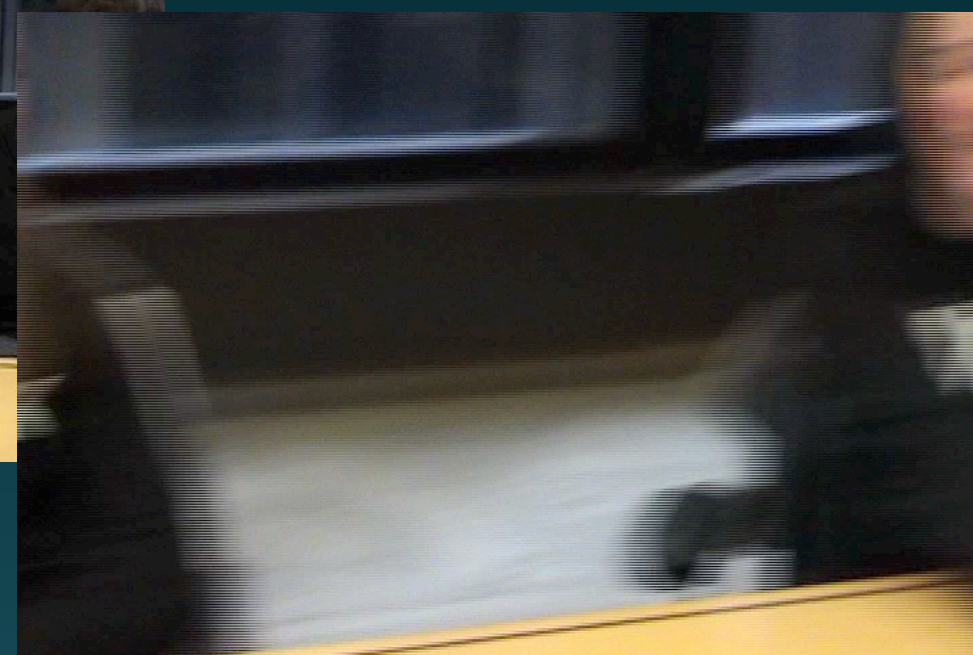
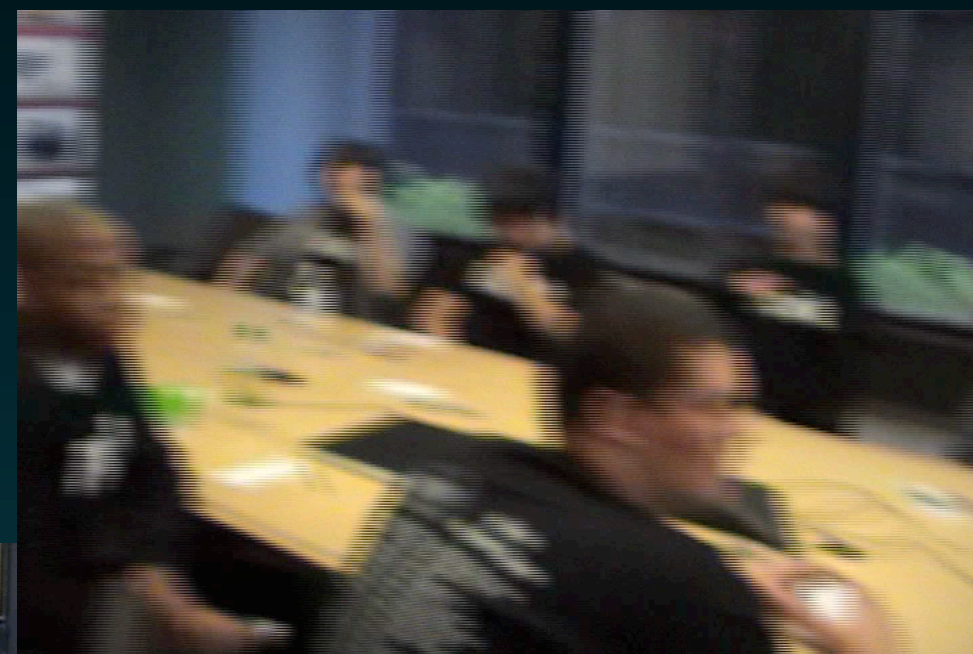
What is the school's commitment?



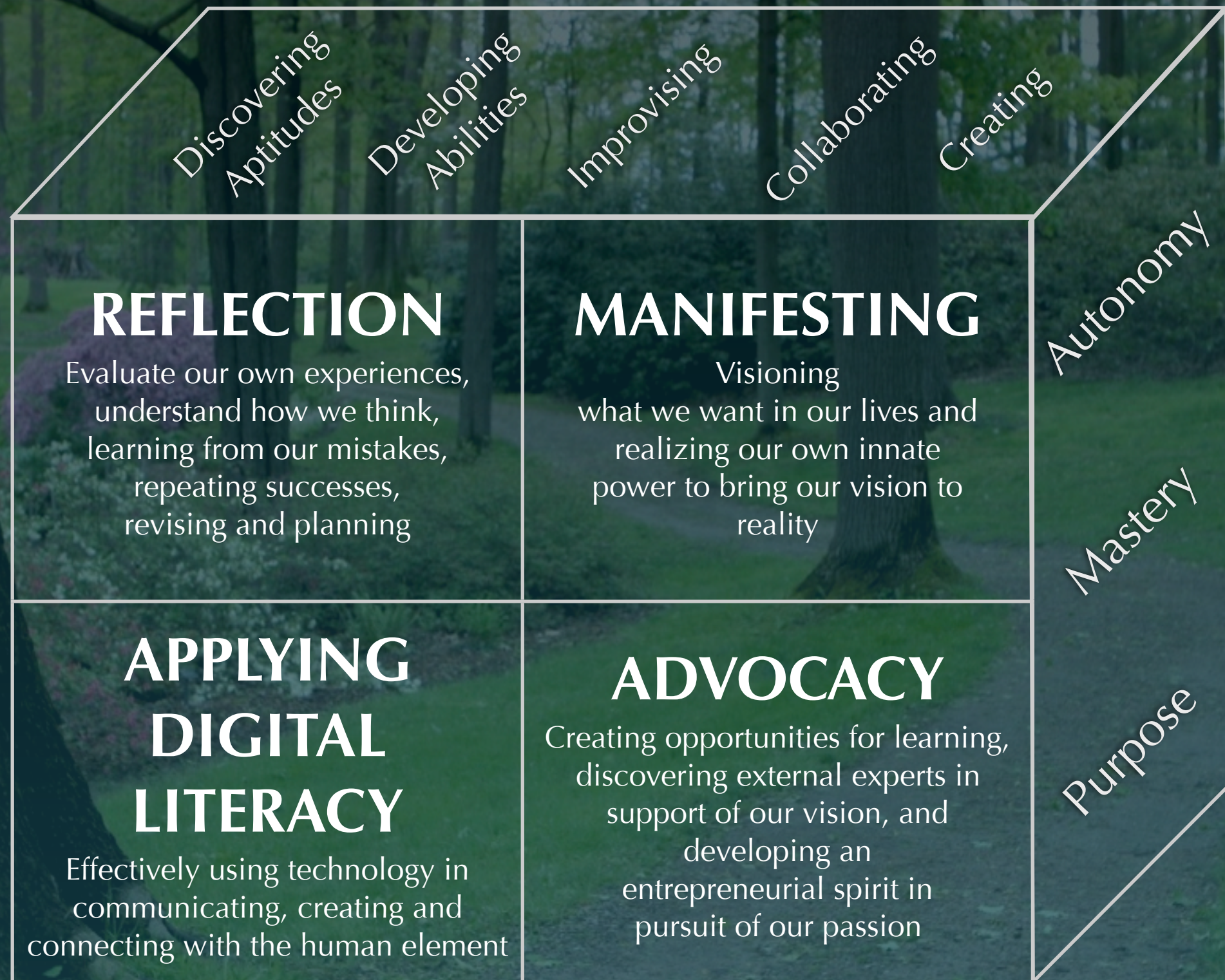
- ▶ Team of students and teacher(s)
- ▶ Opportunity for team to collaborate within school and with other teams in the VALEES region
- ▶ Access to technology
- ▶ Opportunity for facilitators to process check with team
- ▶ Support for success in terms of time and opportunity to present their work
- ▶ Acknowledge the team's work





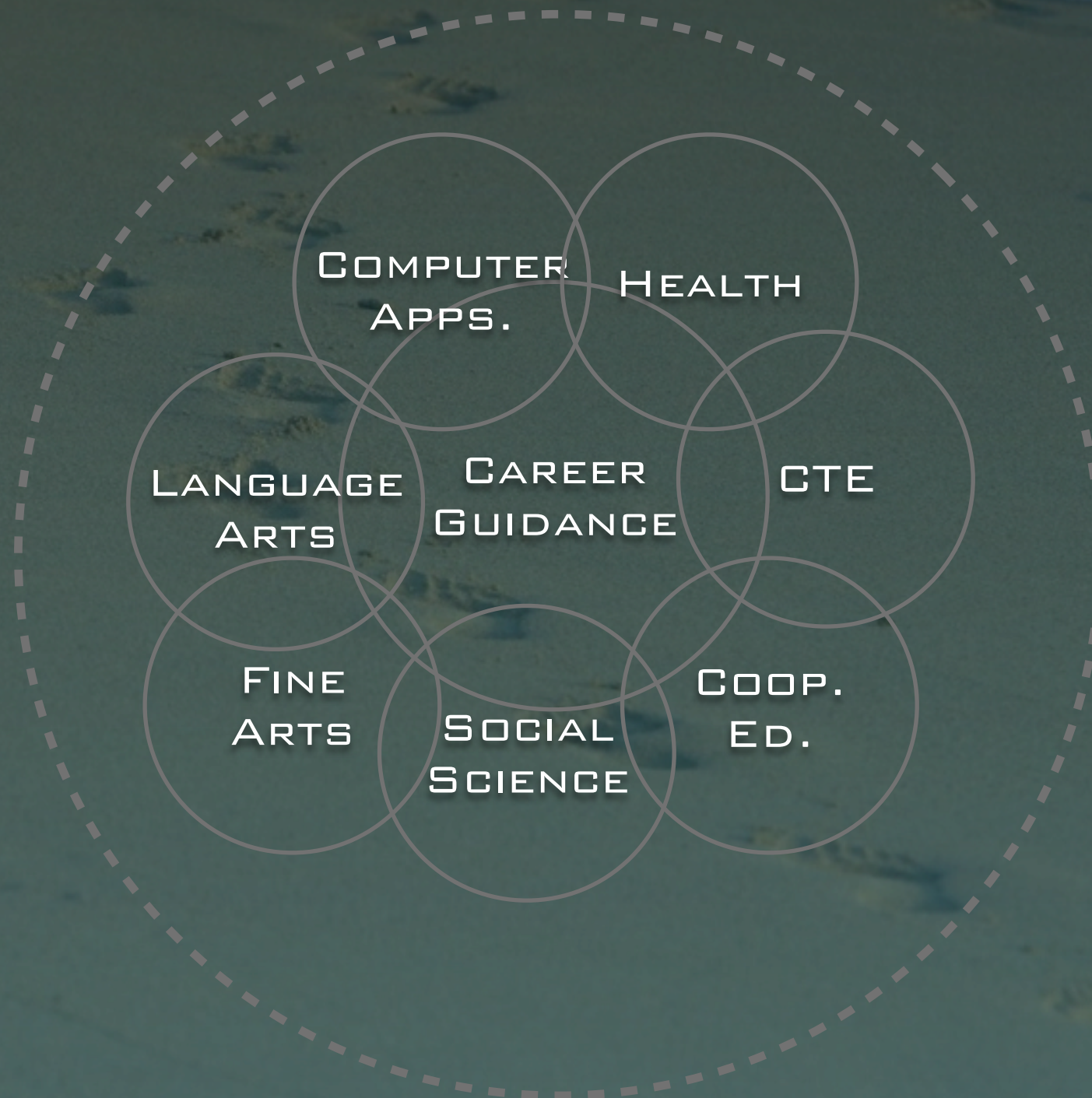


Living miDream





WHERE MIGHT IT FIT IN MY SCHOOL?



**WRITE DOWN THREE IDEAS OR QUESTIONS
THAT YOU ARE INTERESTED
IN EXPLORING THAT MIGHT
HELP STUDENTS:**

- **DISCOVER THEIR TALENTS**
- **TAKE OWNERSHIP IN THEIR LEARNING**
- **STRIVE FOR MASTERY**
- **PURSUE THEIR PASSION**
- **EXPLORE CREATIVE, INNOVATIVE
WAYS TO SOLVE-PROBLEMS**

RESOURCES

VALLEY EDUCATION FOR EMPLOYMENT SYSTEM
WWW.VALEES.ORG

NEWARK COMMUNITY HIGH SCHOOL DISTRICT #18
WWW.NEWARKHS.K12.IL.US

SANDERS CONSULTING SERVICE
WWW.SANDERSCONSULTINGSERVICE.COM

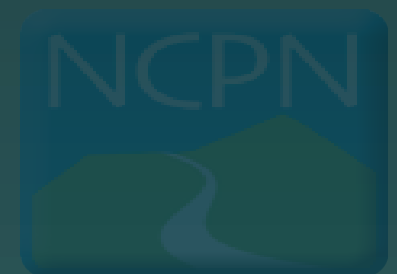
San Antonio 2013

Living miDream

Engaging Students in Exploring Career Pathways

Finding my pathway in pursuit of my passion

**National
Career Pathways
Network
Conference**



*Linking Education
and Economic Prosperity*

